

CUDP-III HEALTH PROGRAMME

Population covered, Infrastructure created and Health Personnel involved as ULB level

Name of ULBs	Population covered in 1000 (approx)	No. of HAU's	No. of Sub-Centres	No. of ESOPDs	No. of Creches	No. of HHWs	No. of FTSs	No. of STSs	No. of PTMOs
1. Barrackpore Municipality	30	1	6	-	-	30	6	1	1
2. Baranagar Municipality	30	1	6	-	-	30	6	1	1
3. Barasat Municipality	30	1	6	-	-	30	6	1	1
4. Budge Budge Municipality	30	1	6	-	-	30	6	1	1
5. Baruipur Municipality	25	1	5	-	-	25	5	1	1
6. Bally Municipality	30	1	6	1	-	30	6	1	2
7. Bansberia Municipality	30	1	6	-	-	30	6	1	1
8. Bhadreswar Municipality	60	2	12	1	-	60	12	2	3
9. Baidyabati Municipality	30	1	6	-	-	30	6	1	1
10. Chandannagar Mnpl.. Corpn.	60	2	12	-	-	60	12	2	2
11. Kolkata Municipal Corporation	450	12	90	-	-	450	90	12	(Fulltime MO/KMC)
12. Champdani Municipality	30	1	6	-	-	30	6	1	1
13. Dum Dum Municipality	20	1	4	1	-	20	4	1	2
14. Gayespur Municipality	30	1	6	-	-	30	6	1	1
15. Garulia Municipality	60	2	12	1	1	60	12	2	3
16. Halisahar Municipality	30	1	6	1	-	30	6	1	2
17. Howrah Mnpl. Corpn.	80	2	16	-	-	80	16	2	2
18. Hooghly-Chinsurah Municipality	60	2	12	-	1	60	12	2	2
19. Kanchrapara Municipality	30	1	6	-	-	30	6	1	1
20. Khardah Municipality	30	1	6	-	-	30	6	1	1
21. Kannagar Municipality	30	1	6	1	-	30	6	1	2
22. North Barrackpore Municipality	60	2	12	1	1	60	12	2	3
23. Naihati	30	1	6	-	-	30	6	1	1
24. North Dumdum Municipality	30	1	6	-	-	30	6	1	1
25. New Barrackpore Municipality	20	1	4	-	-	20	4	1	1
26. Panihati Municipality	60	2	12	-	-	60	12	2	2
27. Rajpur - Sonarpur Municipality	30	1	6	1	-	30	6	1	2
28. Rishra Municipality	30	1	6	-	-	30	6	1	1
29. Serampore Municipality	30	1	6	-	-	30	6	1	1
30. Uluberia Municipality	30	1	6	-	-	30	6	1	1
31. Uttarpara-Kotrung Municipality	60	2	12	-	-	60	12	2	2
TOTAL:-	1585	50	317	8	3	1585	317	50	46

The Kolkata Municipal Corporation

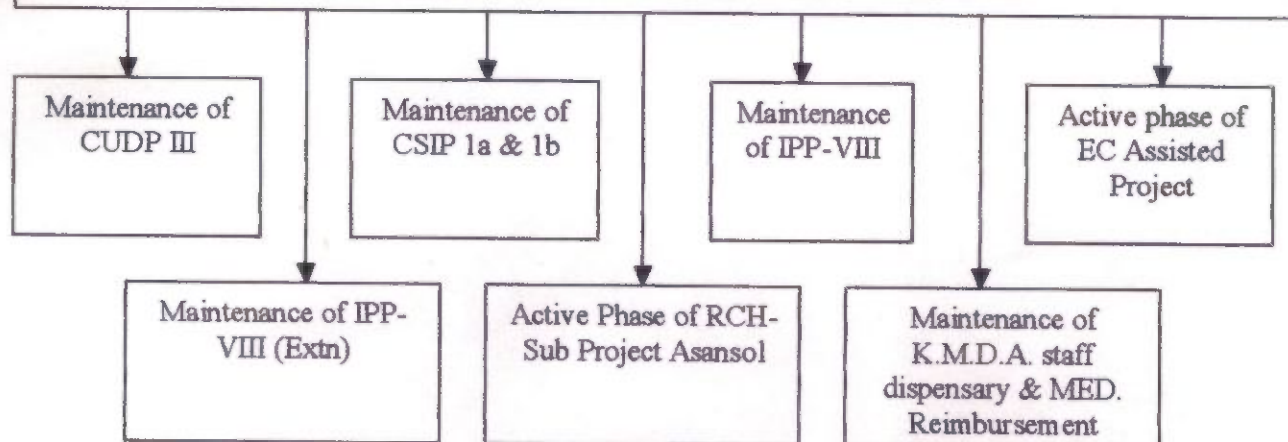
**Health Department
5, S.N. Banerjee Road
Kolkata - 700 013**

Infrastructure & Services

Infrastructure	Services	Remarks
Ward Health Unit Medical Officer -1 Multipurpose Health Asst.-4 Health Sarkar-1 Field Worker-4	Birth Registration Immunization Control of Malaria, Acute Diarrhoeal Diseases etc.	98 at present functioning To set up WHU in remaining wards help from SFC fund needed. Available MO -56 MHA-115 H Sarkar-76 Field worker-517
Malaria Clinic No.60	Detection & Treatment of malaria	As per NAMP guideline
Leprosy Clinic No.54	Diagnosis & Treatment of Leprosy	
Chest Clinics No.10	Diagnosis & Treatment of TB cases as per RNTCP guidelines	52 microscopy & 92 DOT centers are working under different TUs
Analytical Laboratory	Testing of Food samples Testing of water samples	As per KMC circular, post of Medical FI has been abolished. 29 non-medical FIs recruited through examination and given training as per PFA rules. But they await Gazette Notification from Govt. of West Bengal and are unable to collect samples for analysis in the laboratory. Drive against adulteration & unsanitary food condition in the eateries has come to a stand still. No penal action can be taken at the moment.
Dispensary No.26	Treatment of common minor ailments	
Dog Pound No.1 (previously 8)	Catching stray / rabid dogs (working in tandem with 2 NGOs - People for Animal & Love N Care)	7 Dog catching van with instruments and trained personnels (At least 28) required
Slaughter House	Slaughtering of large animals, pigs, sheep, goats	Needs upgradation and modernization because the present method of slaughtering & live stock maintenance is very much primitive

Burning Ghats No.7	Disposal of dead in electric crematorium and through wooden pyres	4 have Pollution Control device
Burial grounds No.7		
MTMTB Hospital No.of beds -176		
Ambulance section	No.14	
Maternity Homes No.4		Needs at least 5 more specialist MOs. There is no OT and Labour room needs upgradation
Health Projects of KMDA Integrated with KMC	KUDP III, KSIP, IPPV III Health Projects for promoting Maternal & Child Health and imparting Health Education and implementation of Health Programmes	

Different Programmes to be maintained under UHIP

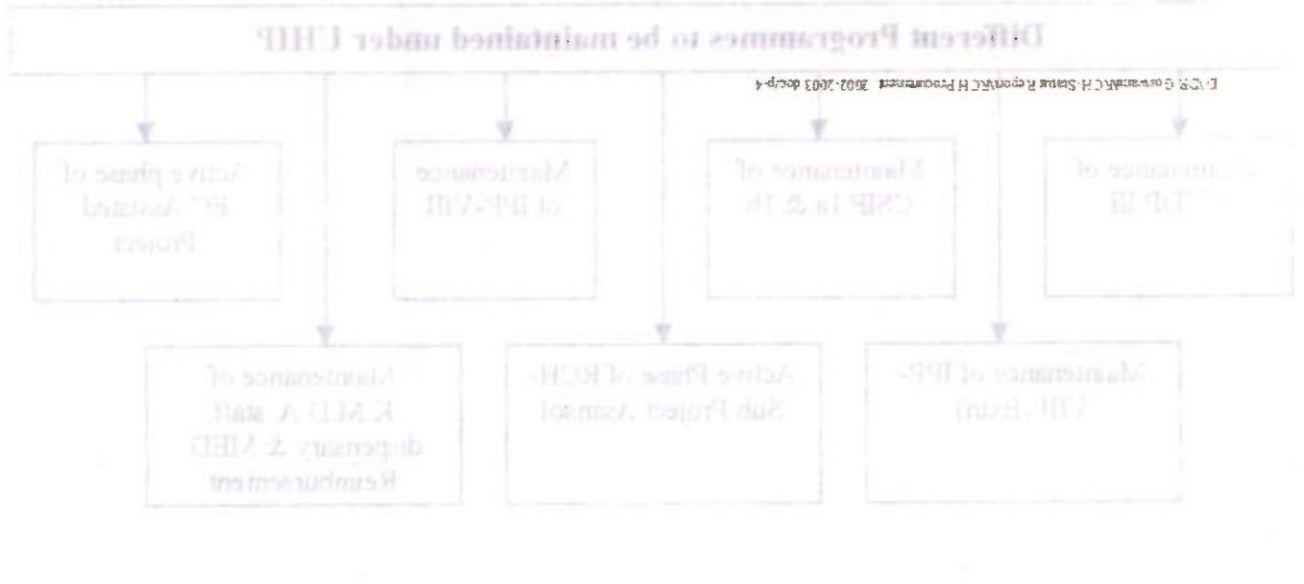


	CUDP III	CSIP	IPP-VIII	IPP-VIII (Extn)	RCH-Sub Project Asansol
No. of ULBs involved	31 in KMA	1 in KMA (15 words in CMC)	40 in KMA	10 in non-KMA	1 in non-KMA
Population covered	16.00 lakhs	2.88 lakhs	38.00 lakhs	8.30 lakhs	2.50 lakhs
Different health facilities created					
A) Block	1600	275	3713	1090	387
B) SC / SHP	320	55	812	250	97
C) HAU / H.P.	50	8	116	35	13
D) ESOPD / O.P.D.	8	2	25	11	2
E) M.H.	-	2	23	11	2
F) Diagnostic Centre	-	-	8	11	1
G) Creche	6	-	-	-	-
Manpower in Health Facilities					
A) At Block Level : HHWs	1600	275	3713	1090	387 360
B) At SHP Level : FTSs	320	55	812	250	97 93
C) At HAU / H.P. Level:					
i) PTMO	50	8	232	70	26
ii) STS / ANM	50	8	232	70	26
iii) Clerk cum Sk.	42	8	116	35	13
iv) Attendant	79	16	232	35	13
v) Sweeper	50	8	116	35	13
D) At ESOPD / O.P.D. Level					
i) PTMO / MO	16	4	50	22	4
ii) Specialist	64	18	200	66	6
iii) Nurse	8	2	25	-	-
iv) Pharmacist	8	2	25	-	-
v) Lab Tech.	-	2	25	-	-
vi) Attendant	16	4	50	22	4
vii) Sweeper	16	4	50	22	4

List Of Items Of Special Laboratory Equipments

Sl.No.	Name of the Item	Unit	Total Req. (Units) during the year
1	Ultrasonography	Per Pc	1
2	X Ray machine with accessories	Per Pc	1
3	Semi Auto Analyzer	Per Pc	1
4	Dryer	Per Pc	1
5	Haematocrit	Per Pc	1
6	Water Bath SS - 4 racks	Per Pc	2
7	Hot air oven	Per Pc	2
8	Incubator	Per Pc	2
9	Rotor Shake	Per Pc	2
10	Auto Clave	Per Pc	2
11	Counting Chamber	Per Pc	2
12	Hot Plate	Per Pc	2
13	Stop Watch	Per Pc	2
14	Timer	Per Pc	2
15	Micro Pipette	Per Pc	4
16	Urino Meter	Per Pc	4
17	Albumino Meter	Per Pc	4
18	Media Plate	Per Pc	12

No of LBS worked : 31 in KMA / 12 work in KMA
 40 in K/A / 10 in non-KMA



E) At M.H. Level :					
i) MO	-	-	46	22	4
ii) Nurse	-	2	69	33	6
iii) G & O Spl	-	-	69	22	4
iv) Lab. tech. Cum Sk.	-	-	23	-	-
v) Aya	-	-	92	-	-
vi) Attendant	-	2	-	22	4
vii) Sweeper	-	2	-	22	4
viii) Night Guard	-	-	-	11	2
F) At Diagnostic Centre					
i) Manager	-	-	8	11	1
ii) Sp. Doctor	-	-	24	33	3
iii) Technician	-	-	24	33	3
iv) Clerk	-	-	8	11	1
v) Attendant	-	-	8	11	1
vi) Sweeper	-	-	8	11	1
G) At Creche					
i) HHWs	8	-	-	-	-
ii) Female helper	8	-	-	-	-
iii) Sweeper	8	-	-	-	-

24 6 379 242 34

409
1256
 1665

276
294
 570

SUDA

STATE URBAN DEVELOPMENT AGENCY

**HEALTH WING
"ILGUS BHAVAN"**

H-C BLOCK, SECTOR-III, BIDHANNAGAR, CALCUTTA-700 091
West Bengal

SUDA-15/98(Pt-VI)/201

02.07.2003

Ref No. :
From : **Project Officer
Health, SUDA**

Date

To : **The Mayor / Chairman,
..... MC / Municipality**

Sub : Computerized MIES.

Sir,

As desired by the Secretary, M.A. Dept., all the MIES sheets with regard to H.P., O.P.D., M.H. & Diagnostic Centre are to be prepared using computer.

For this purpose, a computer per H.P. has already been placed with you. It is expected that in the meantime you have already started generation of computerized MIES sheet. To expedite / strengthen the process, the officials from Health Wing, SUDA will visit shortly to your ULB on prior fixation of mutually convenient date.

For quick review of the work, you are requested kindly to ensure the following :

- (a) Working condition of the computer in H.P.
- (b) Availability of the concerned person who is already doing data entry / preparing the said MIES.
- (c) Availability of the concerned FTSSs.

The presence of your HO and UHIO is desirable during review and for briefing as well, so that the system developed is continued and sustained.

A feed back report is to be submitted to the Secretary, M.A. Dept.

You are requested kindly to render necessary assistance to the officials who will be visiting to you in this regard.

Yours faithfully

Project Officer

02.07.2003

SUDA-15/98(Pt-VI)/201(1)

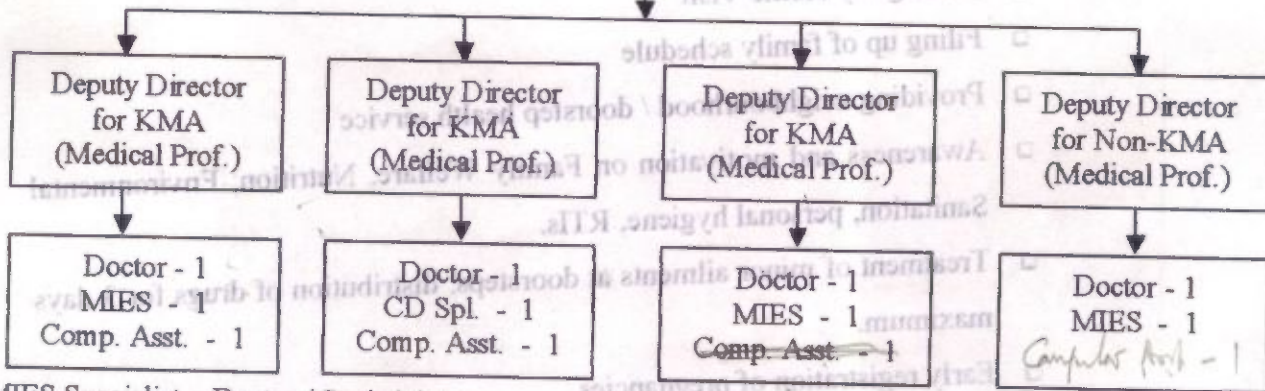
CC

**Project Director, IPP-VIII (Extn) MC / Municipality for favour of
kind information and necessary action.**

Project Officer

Proposed Organogram of UHIP

Director (Medical Professional)



MIES Specialist = Doctor / Statistician

Job Responsibilities

Director	<i>Overall in charge of UHIP</i>
Deputy Director (1)	<input type="checkbox"/> Supervision / monitoring of service implementation of diff. health prog. in 14 ULBs in KMA. <input type="checkbox"/> MIES. <input type="checkbox"/> Active Project in KMA like EC.
Deputy Director (2)	<input type="checkbox"/> Supervision / monitoring of service implementation of diff. health prog. in 13 ULBs in KMA. <input type="checkbox"/> Training. <input type="checkbox"/> Administration. <input type="checkbox"/> Staff dispensary and medical reimbursement of K.M.D.A.
Deputy Director (3)	<input type="checkbox"/> Supervision / monitoring of service implementation of diff. health prog. in 14 ULBs in KMA. <input type="checkbox"/> I.E.C. <input type="checkbox"/> Finance.

* Other manpower required to assist the UHIP cell are :

For Administration :

- a) Head Assistant
- b) Senior Assistant
- c) PA to Director
- d) PA for four (4) Deputy Directors
- e) Clerk
- f) Store Keeper
- g) Attendant

For Finance Section :

- a) ACFA
- b) Accounts Officer
- c) SO Accounts
- d) Accounts Assistant
- e) Cashier
- f) Attendant

The said manpower may be engaged from KMDA existing staff.

Handwritten notes:
 DD-1 - Adm & Finance
 DD-2 - Triage MIES (with 14)
 DD-3 - IEC MIES (918 VHP ETC)

Essential RCH Service Package At Block Level Are :

- Fortnightly Home Visit
- Filing up of family schedule
- Providing neighbourhood / doorstep health service
- Awareness and motivation on Family Welfare, Nutrition, Environmental Sanitation, personal hygiene, RTIs.
- Treatment of minor ailments at doorsteps, distribution of drugs for 3 days maximum.
- Early registration of pregnancies
- Referral to health facilities
- Act as depot holder of ORS, Nirodh, OCP, Iron Folic Acid Tablet
- Counselling on child nutrition, immunisation
- Preparation and submission of MIES report
- Assisting towards implementation of other on going National Health Programmes namely National Anti-malaria Programme (NAMP), Revised National TB control programme (RNTCP), AIDs Control Programme, National Leprosy Eradication Programme (NLEP) and the like

b) At Sub-Health Post (SHP) Level :

The Sub-Health Posts are actually the Nerve Centres for delivering out-reach services in the vicinity of the door steps of the beneficiaries. These are in fact the Primary Facility tier for service delivery. In consideration of the distant and dispersed location of the slum clusters, one SHP for a population of (approx). 3750 beneficiaries (750 families) covered by HHWs will be set up. Suitable accommodation for those SHPs may be arranged in the community i.e. private house, clubs, community premises, municipal premises etc. A token amount may be provided to the Sub-Health Post towards service charges. One First Tier Supervisor is to be selected from among the HHWs having necessary qualities of drive, initiative and leadership. One FTS will remain in charge of each SHP and supervise the activities of 5 HHWs each covering 150 families.

The SHPs are provided with Doctors and Nurses in addition to FTS.

VE 8th
b/1/1/1/1/1
Carlier-1

MIES
cell

Admin
cell

- MIES Officer
- Doctor
- Statistician
- Computer Assst - 2 (MIES)
- - 1 (Adm)
- Head Clerk Assst.
- Sr. Assst.
- PA to Director.
- PA - 2
- Clerk
- Attendant - 1
- Sweeper
- stock expert
- M.O Disp.
- M.O (PT-Tiny) Disp.
- M.O (M.O. Reimbursement)

1 KMP
Non-KMP

1 - non-KMP
1 - Director
1 - KMP
2 - Admin Disp.

Admin
Tig
SIFC
EMIS
Finance

KMA

41

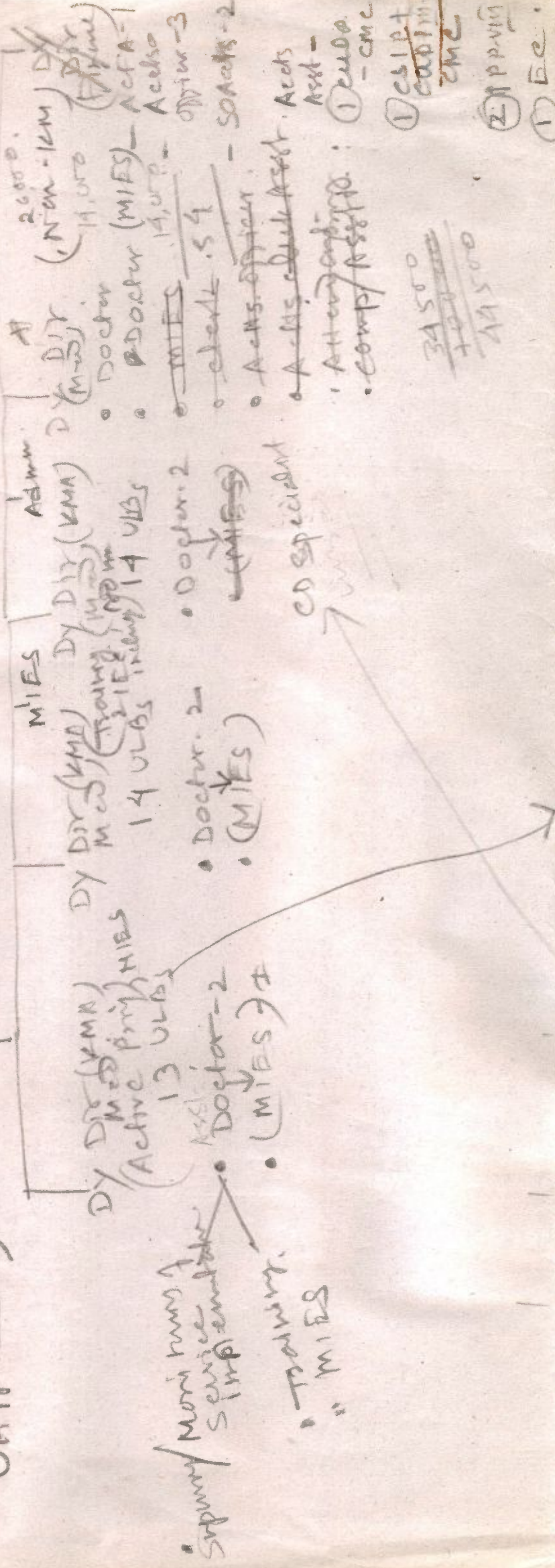
UOs

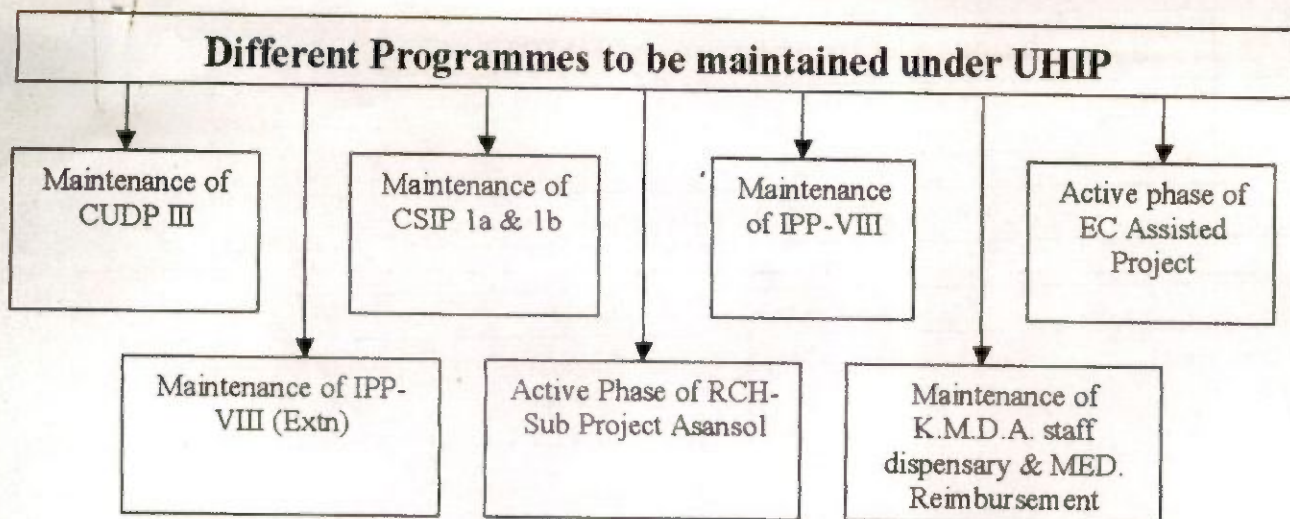
Non-KMA

11

Director (Health Personnel)
Medical

CHIP ->



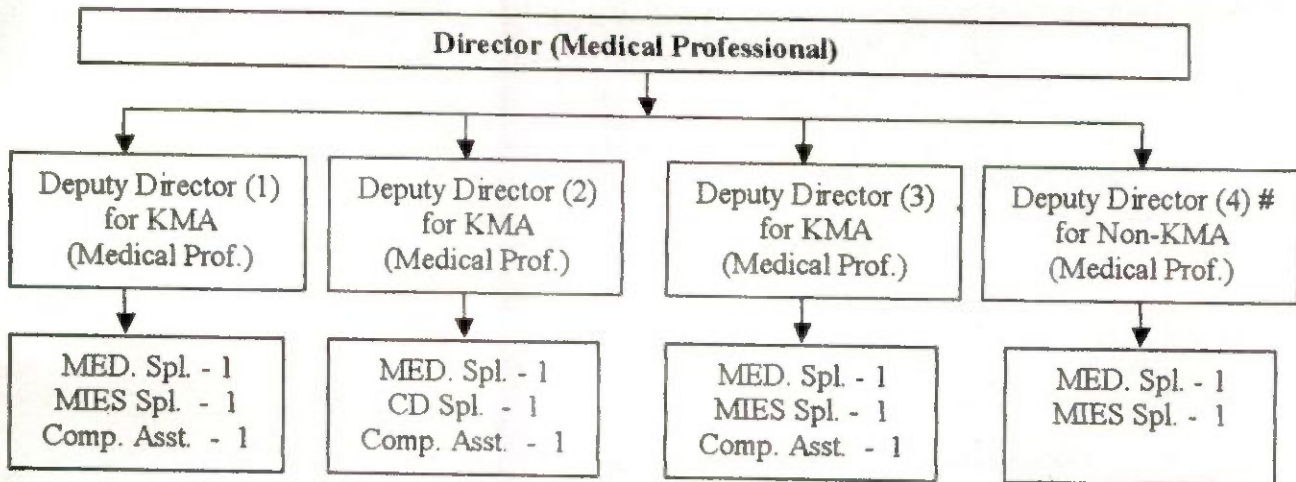


Synopsis of the Programmes under UHIP

Item	KMA	Non-KMA	Total
No. of ULBs involved	41	11	52
Population covered (In lakhs)	56.88	10.69	67.57
Different Health Facilities Created (Nos.)			
Block	5588	1477	7065
SC / SHP	1187	347	1534
HAU / HP	174	48	222
ESOPD / O.P.D.	35	13	48
M.H.	25	13	38
Diagnostic Centre	8	12	20
Creche	6	-	6
Manpower engaged in Health Facilities (Nos.)			
HHWs	5588	1477	7065
FTSs	1187	347	1534
PTMO	290	96	386
STS / ANM	290	96	386
Others	1665	570	2235

Keeping in view, the wider domain of the total programme and quality of monitoring & supervision for effective Operation & Maintenance, and convergence of different Health Programmes in the concerned ULBs, aiming towards sustainability by the ULB and community, the proposed organogram of UHIP has been drawn as under. Due care has been taken to ensure that bare minimum technical professionals be kept to oversee the programmes.

Proposed Organogram of UHIP



MIES Specialist = Doctor / Statistician.

In view of distant location of ULBs in Non-KMA, one separate Deputy Director has been earmarked to look after supervision and monitoring of Health Programmes including I.E.C., training, MIES. However, administration and financial aspect will be looked after by the Deputy Director earmarked for the purpose.

N.B. 1 : Director - 1, Dy. Director - 4, Medical Spl. - 4, MIES Spl. - 3, CD Spl. - 1, Computer Asstt. - 3, (Total - 16) - all are to be engaged either on deputation from Government or open market on contractual basis.

N.B. 2 : Existing Technical Professionals (Health Professionals, CD Spl, MIES Spl. Finance Prof. & Computer Assistant) at K.M.D.A. and SUDA level are 18 & 3 respectively, totaling 21. In the proposed organogram, the total no. of such professionals have been reduced to 16 - towards adoption of economic measures.

N.B. 3 : All the DDs, Medical Spl, MIES Spl. and CD Spl. will undertake field visits for the purpose of supervision and monitoring.

Job Responsibilities

Director	Overall in charge of UHIP.
Deputy Director (1)	<input type="checkbox"/> Supervision / monitoring of service implementation of diff. Health programme including training, I.E.C., MIES of 14 ULBs in KMA. <input type="checkbox"/> Active Project in KMA like EC. <input type="checkbox"/> Overall in charge of MIES of all the programmes.
Deputy Director (2)	<input type="checkbox"/> Supervision / monitoring of service implementation of diff. Health programme including training, I.E.C., MIES of 13 ULBs in KMA. <input type="checkbox"/> Administration including Staff dispensary and medical reimbursement of K.M.D.A. <input type="checkbox"/> Finance. <input type="checkbox"/> Overall in charge of administration and finance.
Deputy Director (3)	<input type="checkbox"/> Supervision / monitoring of service implementation of diff. Health programme including training, I.E.C., MIES of 14 ULBs in KMA. <input type="checkbox"/> Overall in charge of training and I.E.C. of all programmes.
Deputy Director (4)	<input type="checkbox"/> Supervision / monitoring of service implementation of diff. Health programme including training, I.E.C., MIES of 11 ULBs in Non-KMA.

Other manpower required to assist the UHIP cell are :

For Administration :	For Finance Section :
Head Assistant	ACFA
Senior Assistant	Accounts Officer
PA / Stenographer	SO Accounts
Clerk	Accounts Assistant
Store Keeper	Cashier
Attendant	Attendant

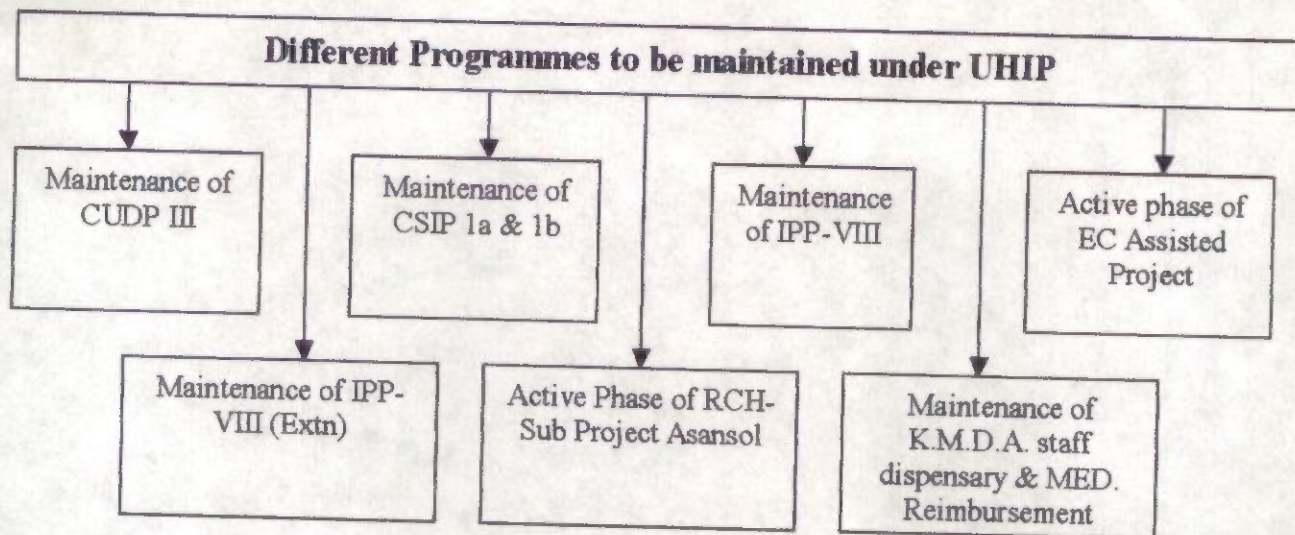
The above category of manpower may be engaged from KMDA existing staff *as will be required.*

Tentative monthly remuneration of Technical Professionals

Post	Tentative monthly remuneration (Amount in Rs.)
Director	25,000/-
Deputy Director	20,000/-
Medical Specialist	15,000/-
CD Specialist	15,000/-
MIES Specialist	15,000/-
Computer Assistant	12,000/-

These pay structure are for the newly engaged personnel on contact basis. In case of deputation, the remuneration will be apropos Govt. rates, which is on the higher side.

In case of engagement of retired personnel, the remuneration will be fixed as per Govt. norms / the suggested monthly remuneration whichever is less.



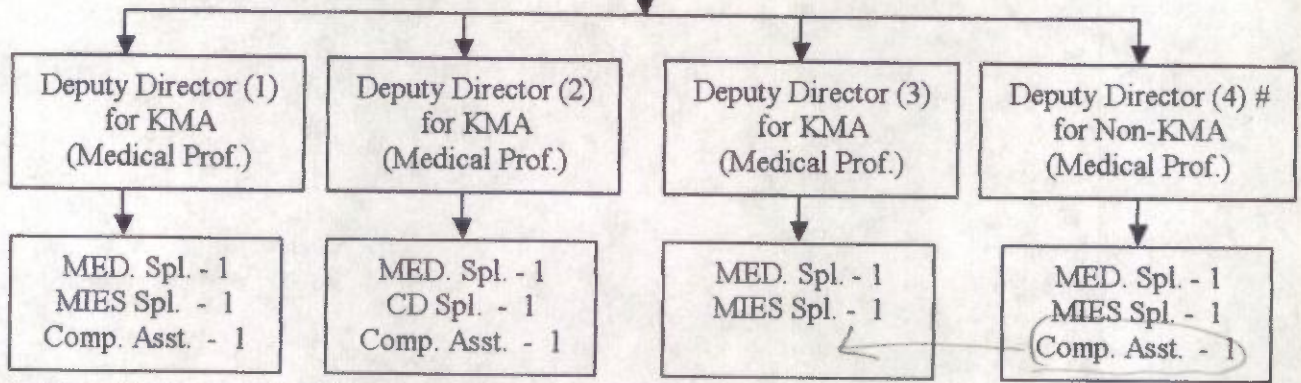
Synopsis of the Programmes under UHIP

Item	KMA	Non-KMA	Total
No. of ULBs involved	41	11	52
Population covered	56.88	10.69	67.57
Different Health Facilities Created			
Block	5588	1477	7065
SC / SHP	1187	347	1534
HAU / HP	174	48	222
ESOPD / O.P.D.	35	13	48
M.H	25	13	38
Diagnostic Centre	8	12	20
Creche	6	-	6
Manpower engaged in Health Facilities			
HHWs	5588	1477	7065
FTSs	1187	347	1534
PTMO	290	96	386
STS / ANM	290	96	386
Others	1665	570	2235

Keeping in view the wider domain of the total programme and quality of monitoring & supervision for effective Operation & Maintenance, and convergence of different Health Programmes in the concerned ULBs, aiming towards sustainability by the ULB and ~~active~~ community participation, the proposed organogram of UHIP has been drawn as under. Due care has been taken to ensure that bare minimum technical professionals be kept to oversee the programmes.

Proposed Organogram of UHIP

Director (Medical Professional)



MIES Specialist = Doctor / Statistician

N.B.1 : Director - 1, Dy. Director - 4, Medical Spl. - 4, MIES Spl. - 3, CD Spl. - 1, Computer Asstt. - 3, (Total - 16) - all are to be engaged either on deputation from Government or open market.

N.B. 2 : Existing Technical Professionals (~~Doctors~~, MIES Spl. *med spl, cd spl, Fin* & Computer Assistant) at K.M.D.A. and SUDA level are 18 & 3 respectively, totaling 21. In the proposed organogram, the total no. of such professionals have been reduced to 16 - towards adoption of economic measures.

Job Responsibilities

Director	Overall in charge of UHIP.
Deputy Director (1)	<ul style="list-style-type: none"> <input type="checkbox"/> Supervision / monitoring of service implementation of diff. Health programme including training, I.E.C., MIES of 14 ULBs in KMA. <input type="checkbox"/> Active Project in KMA like EC. <input type="checkbox"/> Overall in charge of MIES of all the programmes.
Deputy Director (2)	<ul style="list-style-type: none"> <input type="checkbox"/> Supervision / monitoring of service implementation of diff. Health programme including training, I.E.C., MIES of 13 ULBs in KMA. <input type="checkbox"/> Administration including Staff dispensary and medical reimbursement of K.M.D.A. <input type="checkbox"/> Finance. <input type="checkbox"/> Overall in charge of administration and finance.
Deputy Director (3)	<ul style="list-style-type: none"> <input type="checkbox"/> Supervision / monitoring of service implementation of diff. Health programme including training, I.E.C., MIES of 14 ULBs in KMA. <input type="checkbox"/> Overall in charge of training and I.E.C. of all programmes.
Deputy Director (4)	<ul style="list-style-type: none"> <input type="checkbox"/> Supervision / monitoring of service implementation of diff. Health programme including training, I.E.C., MIES of 11 ULBs in Non-KMA.

In view of distant location of ULBs in Non-KMA, one separate Deputy Director has been earmarked to look after supervision and monitoring of Health Programmes including I.E.C., training, MIES. However, administration and financial aspect will be looked after by the Deputy Director earmarked for the purpose.

Acc the DDs, med spl, MIES spl, cd spl will undertake field work for the purpose of supervision & mon

Other manpower required to assist the UHIP cell are :

For Administration :

- a) Head Assistant
- b) Senior Assistant
- c) PA / Stenographer
- d) Clerk
- e) Store Keeper
- f) Attendant

For Finance Section :

- a) ACFA
- b) Accounts Officer
- c) SO Accounts
- d) Accounts Assistant
- e) Cashier
- f) Attendant

The above category of manpower may be engaged from KMDA existing staff.

Tentative monthly remuneration of Technical Professionals

Post	Tentative monthly remuneration (Amount in Rs.)
Director	25,000/-
Deputy Director	20,000/-
Medical Specialist	15,000/-
CD Specialist	15,000/-
MIES Specialist	15,000/-
Computer Assistant	12,000/-

These pay structure are for the newly engaged personnel on contract basis. In case of deputation, the remuneration will be apropos Govt. rates which is on the higher side.