



ABSTRACT COST OF THE PROJECT

1. Name of the Project : Construction of Health Sub-Centres (2 Nos.)
2. Location of the Project: i) Ramkrishna Maidan, Narayantala, Ward No. 18, Po. Bansberia, Dist. Hooghly.
ii) Palaspur (opposite side of the medicinal plant, Ward No. 21, Po. Tribeni, Dist. Hooghly.

Sl. No.	Location	Item	Quantity	Rate@	Amount
1	Ramkrishna Maidan, Narayantala, Ward No 18, Po. Bansberia, Dist. Hooghly	Construction of Health Sub-Centres (2 Nos.)	1 no.	285286.00 244135.00 2,47,762.00	285286.00 244135.00 2,47,762.00
2	Palaspur (opposite side of the medicinal plant, Ward No. 21, Po. Tribeni, Dist. Hooghly.	Construction of Health Sub-Centres (2 Nos.)	1 no.	285286.00 244135.00 2,47,762.00	285286.00 244135.00 2,47,762.00
TOTAL = Five Lakhs Seventy thousand five hundred seventy two					Rs. 570572.00

Four lacs ninety five thousand two hundred and twenty four only.
Four lacs ninety five thousand two hundred and twenty four only.
 (Total, Rupees four lacs ninety five thousand five hundred twenty four only).

[Signature]
 Sub-Assistant Engineer
 Bansberia Municipality

[Signature]
 Assistant Engineer
 Bansberia Municipality

[Signature]
 Chairperson
 Bansberia Municipality

[Signature] 29/10/07
 Sub. Asst. Engineer
 M. B. D. Hooghly Divn
 Chinsurah

MAY BE APPROVED
[Signature]
 Assistant Engineer
 Hooghly Division, M.B. Divn,
 Govt. of West Bengal

APPROVED
[Signature]
 Executive Engineer
 Hooghly Division, M.E. Divn
 Dept of Municipal Affairs
 Govt. of West Bengal

Forwarded to the Project Director
 CMU, K.U.S.P.
 For further action

[Signature]
 Superintending Engineer 22-11-07
 West Circle
 M. E. Divn.

[Signature]
 Govt. of West Bengal
 19/11/07

Based on P.W.D. Schedule of (Electricity) 2001 with
 resolution effect from Feb-2007



BANSBERIA MUNICIPALITY
Details of Measurement and Estimates
 Name of the work :- Electrification Of Health Sub-Centre

Sl. No.	Description of items	Quantity	Rate		Amount	
			@	Per	Rs.	P.
1	P- E-7, It. - 14, C Supplying and drawing 1.1 KV. grade single core PVC insulated (unsheathed) copper wires (approved make) of the following sizes in the pre-laid polythene pipe and by the pre-laid G.I. fish wire and making necessary connections as required.	30 m	31.02 45.12	m	930.60 1353.60	
	<i>2 x 1/2.24 (4 sq mm)</i>					
2	P- E-8, It. - 15 a Distn. Wiring with 1/044 P.V.C. C.I. insulated and unsheathed wire of copper conductor in 19 mm (3/4") bore, 3 mm, (1/3") thick polythene pipe complete with all accessories embeded in wall to light /an call bell points with piano key type switch (Anchor) fixed on sheet metal (16 S.W.C) switch board with bakelite/per-spex (wall matching colour) top cover (3 mm thick) flushed in wall incl. mending good damages to original finish					
	a) Average run 6 mts. (20 ft.)	8 point	485.00	per point	1480.00	2832.00
	<i>P-E-10/11-16-17(a)</i>					
3	Distn. Wiring with 2 x 1/044 x 2 x 3/029 P.V.C. to 250 V. 5 amps. 3 Pin plug points incl. S & F 250 V. 5 amps. 3 Pin plug socket without top & switch (Anchor) fixed on sheet metal (16					
	a) Average run 1.5 mts. (5 ft.)	5 point	420.00	per point	600.00	1014.00
	<i>P-B-3, It. 2C</i>					
4	Iron Clad Main Switches (Rewireable type fuses) Conduit Entry type. 500 D.P. with Fuses on live sides only		475.20 667.20		475.20 667.20	
	15 Amps. <i>SURYA</i>	1 point	270.00	per point	270.00	270.00
	<i>P-G-1, It. - 2(a)</i>					
5	Earthing with 50 mm (2") dia galvanised iron pipe 3.64 mm thick x 3 mts. (10' ft) long and 1 x No. 4 S.W.G. G.I. wire (4 mts. Long), 15 mm (1/2") dia. X 80 mm (3") long G.I. bolt, double nuts and double washers incl. S & F 15 mm dia G.I. pipe protection (1 Mt. long) to be filled with bitumen, partly above the ground level driven to an average depth of 3.65 mts. (12" Ft.) below the ground level and restoring the (1 meter long). <i>surface duly rammed.</i>	1 point	837.60 540.80	per point	837.60 540.80	

No.	Description of items	Quantity	Rate		Amount	
			@	Per	Rs.	P.
6	P-G-1, It. - 4 (f) <i>P-G-3, It. 5(a) (vi)</i>					
	Connecting the equipments to earth busbar including S & F G.I. wire of sizes as below on wall / floor with staples buried inside floor/wall as required and making connections to equipments with bolts, nuts, washers, cable lugs etc. as required and mending good all the damages.					
	No. 14 S.W.G. (2.30 mm dia.)	15 m	1.00	m	15.00	21.60
	<i>P-B-12, It. 37</i>					
7	Supply of C.F.L. Lamps Make :- Philips. <i>60W</i>					
	Model No. - TORNADO, 20 WBC	2 nos.	225.00	no.	450.00	25.20
	<i>P-B-12, It. 38 / P-C-3, It. 17</i>					
8	Supply of Tube Light Make :- Philips.					
	Model No. - TCS 19/ 136 LPF 1 x TLD 36 W / TL 40 W <i>with all fittings</i>	4 nos.	800.00	no	3200.00	643.20
	<i>P-B-11, It. 35</i>					
9	Supply & Fixing of Crompton Greaves Fan. <i>48" 230V/250V, 50 cycle</i>					
	Model :- Cool Breeze <i>No Fan</i>					
	Item :- C B 1200 MM -BRN/WHT/BB					
	Colour :- White	2 nos.	1010.00	no	2020.00	2025.60
10	Service Connection :-					
	P-6, It. - 7.4 <i>P-H-7, It. 7(4)</i>					
	L' Type/Vertical Type G.I. Pipe Bracket					
	Supplying and fixing 40 mm (1 1/2 ") dia x 3.20 metre ling (incl. bands) 'L' Type service bracket on wall for carrying 2 - wire and an earth wire complete with Galv. Clamp for stay insulators etc. No. 7/14 S.W.G. stredned Galv. Wire for stay with 230 x 13 mm dia straining screws, 75 x 88 mm. (3" x 3 1/2") porecelain shakle insulators with Galv. straps etc. and painting	1 no.	740.80	set	740.80	964.80
11	P-20- (K.M.D.A) <i>P-B-1, It. 1</i>					
	1100 Volt Grade PVC insulated Armoured Aluminium Conductor Cables. <i>Flat torn cores</i>					
	Area in Sq. m. - 2.5 dia (1/1.80)					
	2 Core Unarmoured Cable	20 m	20.00	m	400.00	180.00

o.	Description of Items	Quantity	Rate		Amount	
			@	Per	Rs.	P.
4	P-G-1, It. - 4.f. P-G-3 It. 5(a) (v)					
	Connecting the equipments to earth busbar including S & F.G.I. wire of sizes as below on wall /floor with stapples buried inside floor/wall as required and making connections to equipments with bolts, nuts, washers, cable lugs etc. as required and mending good all the damages.		1.44			21.60
	No. 14 S.W.C. (2.30 mm dia)	15 m	1.00	m		15.00
13	Service connection for W.B.S.E.D.C.L.				Lump Sump (L.S)	4200.00 4000.00
					TOTAL	14505.20

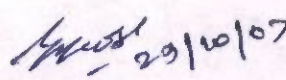
~~14,363.40~~
14,149.80

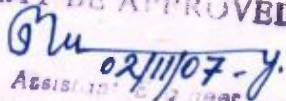
SAY Rs. 14,505/- ~~14,363.40/-~~
14,150/-


Sub-Assistant Engineer
Bansberia Municipality
Sub-Assistant Engineer,
Bansberia Municipality


Assistant Engineer
Bansberia Municipality
Dipak Kumar Bhattacharyya
Assistant Engineer (EUSP)
BANSBERIA MUNICIPALITY


Chairperson
Bansberia Municipality
Chairperson
Bansberia Municipality


Sub. Assn. Engineer,
G. E. D. Hooghly Divn
Chinrao

MAY BE APPROVED

Assistant Engineer
Hooghly Div. A.B. Div.
Govt. of West Bengal

APPROVED

Executive Engineer,
Hooghly Division, M.B. Div.
Dept of Municipal Affairs
Govt. of West Bengal

BANSBERIA MUNICIPALITY

Details of Measurement and Estimates

Name of work :- Construction of Health Sub-Centre within Bansberia Municipality

Sl. No.	Description of items	Quantity	Rate		Amount Rs. P.
			@	Per	
1	P-68/IT-1(a)/(b) Earth work in excavation in foundation trenches or drains in all sorts of soil (Including mixed soil but excluding laterite or sandstone) including removing. Spreading or stacking the spoil within the lead of 75m as directed. The item includes necessary trimming the sides of trenches. levelling dressing and dressing and ramming the bottom. bailing out water as required complete.	28.00 30.14 m ³	4187.00	% m ³	1261.96
	<i>a) Depth of excavation not exceeding 1500 mm</i>				
2	P-68/IT-2(a)/(b) Earth work in filling in foudation trenches or plinth with good earth. In layers not excceding 150 mm including watering & ramming ect layer by layer complete. (payment to be made on the basis of measurment of finished quantity of work)				
	a) With earth obtained from excavation of foundation.	5.60 6.028 m ³	2600.00	% m ³	145.60
3	P 84/IT 1 Single brick flat soling of picked jhama bricks including ramming and dressing bed to proper level and filling joints with powder earth and local sand	56.43 58.63 m ²	114.00	m ²	6433.02
4	P 84/IT 4 Cement concrete with graded jhama khoa(30 mm size)excluding shuttering In ground floor and foundation (a) 6:3:1 proportion	6.384 6.715 m ³	1891.00	m ³	12072.14
5	P-106/It.26(a)& (b) 1st Class brick work in cement mortar (6:1) a) In foundation & plinth	17.104 18.026 m ³	1902.00	m ³	32531.80
	b) In superstructure	16.00 26.928 m ³	1959.00	m ³	31344.00
6	P-108/It.33 125 mm thick brick works in cement mortar (4:1) in ground floor	5.024 m ²	285.00	m ²	1431.84

* Based on P.W.D. schedule effect from 1st April, 2007.

Sl. No.	Description of items	Quantity	Rate		Amount	
			@	Per	Rs.	P.
7	P-136/lt.11 25 mm thick damp proof course with cement concrete with stone chips (4:2:1) and admixture of water proofing compound as per manufacturer's specification over a coat of polymer based paint, double chequered complete as directed (cost of water proofing compound & polymer based paint to be paid separately)	7.843 m2	94.00	m2	737.24	
8	P-98/lt.16(a) Hire & Labour charges for shuttering with centreing and necessary staging upto 4 m using approved stout props and thick hard wood planks of approved thickness with required bracing for concrete slabs, beams, columns, lintels, curved or straight including fitting, fixing, and striking out after completion of works (upto roof of ground floor)					
	a) 25 mm. to 30 mm. thick wooden shuttering as per	44.95 m2	143.00	m2	6427.85	
9	P-86/lt.7(a) Nominal Mix M-20 Cement concrete with graded stone chips (20 mm size) excluding shuttering and reinforcement, if any, in ground floor. A) Pakur/Chandil Variety	4.618 m3	2944.00	m3	13595.39	
10	P-100/lt.19(a)(i) Reinforcement for reinforced concrete work in all sorts of structures including distribution bars, stirrups, binders, etc. including supply of rods, initial straightening and removal of loose rust (if necessary) cutting to requisite length, hooking and bending to correct shape, placing in proper position and binding with 16 gauge black annealed wire at every inter-section, complete as per drawing and direction. (a) For works in foundation, basement and upto roof of ground floor/upto 4 p.m. (i) Tor Steel/Mild /Steel	0.435 M.T	32000.00 40,585.00	M.T	13920.00 17,654.50	

Sl. No.	Description of items	Quantity	Rate		Amount	
			@	Per	Rs.	P.
11	P-342/lt.1(b,c) Plaster (in wall, floor, ceiling etc.) with sand and sand cement mortar including rounding off or chamfering corners as directed and raking out joints or roughening of concrete surface, including throating, nosing and drip course where necessary (ground floor)					
	i) With 6:1 cement mortar					
	b) 20 mm. thick plaster	66.50 m ²	53.00	m ²	3524.50	
	c) 15 mm thick plaster	97.48 m ²	45.00	m ²	4386.60	
	ii) With 4:1 cement mortar					
	c) 10 mm. thick plaster	30.60 m ²	47.00	m ²	1438.20	
12	P-126/lt.3(iii) & P-128/lt.4 (a) (ii) Artificial stone in floor, dado, staircase etc. with cement concrete (4:2:1) with stone chips, laid in panels as directed with topping made with ordinary or white cement (as necessary) and marble dust in proportion (2:1) including smooth finishing and rounding off corners and including applications of cement slurry before flooring works. using cement @ 1.75 Kg./sq.m. all complete including all materials and labour.					
	i) Single B.F.S.	40.96 m²	114.00	m²	4669.44	
	ii) Cement Concrete (6:3:1 proportion)	4.096 m³	1891.00	m³	7745.54	
	iii) 35 mm thick	29.44 40.96 m ²	133.00	m ²	5447.68	3915.52
13	P-346/lt.7 Neat cement punning about 1.5 mm. thick in wall, dado, window, sills, floor, drain etc.	15.42 m ²	16.00	m ²	246.72	
14	P-214/lt.1(b) Wood work in door and window frame fitted and fixed complete including a protective coat of painting at the contact surface of the frame Sal - (Siliguri)	0.171 m ³	39147.00	m ³	6694.14	
15	P-266/lt.90 (i) c & lt.90 (ii) c Styles & rails of wooden shutters fitted and complete (Payment to be made on area of new work only)					
	i) For 25 mm. thick shutter <i>12mm thick panel</i>		1221.00			
	c) Gamari	6.96 m ²	825.00	m ²	5742.00	8498.16

P-262 /lt-93

Panel shutter for door & window as per design, each panel consisting of single panel without joining including fitting & fixing.

Sl. No.	Description of items	Quantity	Rate		Amount	
			@	Per	Rs.	P.
16	P-190 /lt.10(a)(i) M.S or W.I ornamental grill of approved design joints continuously welded with M S.,W.I., flats and bars for windows,railing etc. fitted and fixed with necessary screws and lugs in ground floor (15.67m ²)					
	i) Grill weighing above 10 kg./sq.m. and upto 16 kg/sq.m (15 kg/m ²)	235.05kg, 45.67 m ²	40.00 ✓	kg	9402.00 ✓	
17	P-224/lt.18(a) M.S.clamp for fixing door and window frame made of flat,bent bar,end bifurcated,fixed in cement concrete with stone chios (4:2:1) fitted and fixed complete as per direction.a) 40 mm x 6 mm above 250 mm upto 350 mm length.	20 nos.	28 ✓	no	560.00 ✓	
18	P-224/lt.20 Iron butt hinges of approved quality fitted and fixed with steel screws,with ISI mark					
	iv) 75 mm. x 40 mm. x 1.12 mm.	30 nos.	12.00 ✓	each	360.00 ✓	
	vii) 100 mm. x 50 mm. x 1.25 mm.	6 nos.	24.00 ✓	each	144.00 ✓	
19	P -230/lt.27 Iron hasp bolt of approved quality fitted and fixed complete (oxidised) with 16 mm dia rod with centre bolt and round fitting					
	b) 300 mm. long	1 no	82.00 ✓	each	82.00 ✓	
20	P-244/lt.69 Anodised aluminium barrel/tower/socket bolt (full covered) of approved quality					
	iv) 75 mm. long x 10 mm. dia bolt	10 nos.	38.00 ✓	each	380.00 ✓	
	vii) 200 mm. long x 10 mm. dia bolt	1 no.	55.00 ✓	each	55.00 ✓	
21	P-242/lt.67 (A) Iron door ring of approved quality fitted and fixed with nut and washer complete					
	i) 37.5 mm. dia	3 nos.	7.00 ✓	each	21.00 ✓	
	ii) 75 mm. dia	10 Nos.	13.00 ✓	each	130.00 ✓	

Sl. No.	Description of items	Quantity	Rate		Amount Rs. P.
			@	Per	
22	P-366/lt.7				
	Priming one coat on timber, plastered or on steel or other metal surface with synthetic enamel/oil bound primer of approved quality including smoothening surfaces by sand papering etc.				
	a) Wood	18.08 m ²	20.00	m ²	361.60
	b) Steel	13.71 m ²	20.00	m ²	274.20
23	P-366 & 368/lt.8(A)				
	Painting with best quality synthetic enamel paint of approved make and brand including smoothening surface by sand papering etc. including using of approved putty etc. on the surface, if necessary				
	a) On timber or plastered surface:				
	iv) Two coats (with any shade except white) <i>With high gloss.</i>	18.08 m ²	46.00	m ²	831.68
	b) On steel or other metal surface:				
	iv) Two coats (with any shade except white) <i>With high gloss.</i>	13.71 m ²	38.00	m ²	520.98
24	P-352/lt.3(c)				
	White washing including cleaning and smoothening surface thoroughly (5 parts of stone lime and 1 part of shell lime should be used in the finishing coat)				
	c) Three coats (on new works only).	97.10 m ²	680.00	% m ²	660.28
25	P-356/lt.7(b) & 360 lt.14 (iii)				
	Cement washing including cleaning and smoothening surface thoroughly (cement to be used @ 15 Kg./100 sq.m. of surface for one coat and @ 25 Kg./100 sq.m. of surface for two coats)				
	(b) Two coats (on new works only)	97.48 m ²	30.97 <i>697.1-</i>	7 m ²	3018.96 <i>697.48</i>
26	P-382/lt.8				
	Supply fitting, fixing cast iron down pipes of approved quality in position with necessary clamps nails including making hole in wall, floor, etc.				
	ii) 100 mm. dia (external)	11.40 m	399.00	m	4548.60

Sl. No.	Description of items	Quantity	Rate		Amount	
			@	Per	Rs.	P.
27	P-280/lt.9 Supplying fitting, fixing C.I. specials of down pipes in position with clamps nails etc <i>shoo</i>					
	c) C.I. bend of down pipe					
	ii) 100 mm. dia	3 nos.	100.00	each	300.00	
	d) C.I. shee of down pipe					
	ii) 100 mm. dia	3 nos.	99.00	each	297.00	
28	P-162/lt.29 Galvanised corrugated iron sheet work (excluding the supporting frame work) fitted and fixed with 10 mm. dia J or L hook-bolts, limpet and bitumen washers and putty complete with 150 mm. end lap and one corrugation minimum side lap.					
	i) In roof					
	a) With 0.63 mm. thick sheet	15.39 m2	366.00	m2	5632.74	
29	P-184/lt.2 M.S. structural works in roof trusses with tubular sections conforming to IS: 806- 1957 & IS: 1161- 1958 connected to one another with bracket gusset cleats as per design <i>including all necessary charge.</i>					
	i) For trusses spanning upto 12.0 m.	0.071 MT	50633.00	MT	3594.94	
30	P-70/lt.3 Filling in foundation or plinth by silver sand in layers not exceeding 150 mm as directed and consolidating same by thorough saturation with water ramming complete, including the cost of supply of sand.					
	a) Do - by fine sand	<i>11.80</i> 10.314 m3	32971.00	% m3	3400.63	<i>3890.58</i>
31	P-160/lt.6 (Sanitary & Plumbing) Flat back urinal (half stall urinal) in white vitreous chinaware of approved make supplied, fitted and fixed in position with brass screws on 75 mm x 75 mm x 75 mm wooden blocks complete.					
	ii) 465 mm. x 355 mm x 265 mm	1 no.	751.00	each	751.00	

Sl. No.	Description of items	Quantity	Rate		Amount	
			@	Per	Rs.	P.
32	P-160/lt.1 (Sanitary & Plumbing) Shallow water closet Indian pattern (I.P.W.C.) of approved make in white vitreous chinaware supplied, fitted and fixed in position (excluding cost of concrete for fixing).					
	iii) 450 mm long	1 no.	499.00	each	499.00	
33	P-84/lt.1 (Sanitary & Plumbing) Wash basin white vitreous china of approved make (without fittings) supplied, fitted and fixed in position on 75 mm x 75 mm x 75 mm wood blocks and C.I. brackets including two costs of painting of C.I. brackets					
	ii) 550 mm. x 400 mm. size	1 no.	967.00	each	967.00	
34	P-68/lt.6 (Sanitary & Plumbing) Supplying, fitting and fixing C.I. automatic cistern complete with syphon, C.I. brackets, nose cock etc. including two coats of painting of brackets and cistern					
	iii) 15.0 litre with 32 mm syphon	1 no.	721.00	each	721.00	
35	P-16/lt.7 (Sanitary & Plumbing) Supplying, fitting and fixing gunmetal stop cock/bib cock of approved make and brand tested to 21 kg per sq. cm.					
	a) 15 mm	2 nos.	153.00 456.00	each	312.00 306.00	
36	P-94/lt.23 (Sanitary & Plumbing) Supplying, fitting and fixing pillar cock of approved make					
	a) C.P.					
	i) 15 mm	1 no.	415.00	each	415.00	
37	P-138/lt.14 (Sanitary & Plumbing) Supplying, fitting and fixing cast iron 'P' or 'S' trap conforming to I.S. 3989/1970 and 1729/1964 including lead caulked joints and painting two coats to the exposed surface (A) 'P' Trap					
	a) Without A.S. horn					
	iii) 100 mm.	2 nos.	365.00	each	730.00	

Sl. No.	Description of Items	Quantity	Rate		Amount	
			@	Per	Rs.	P.
38	P-170/It.3 (Sanitary & Plumbing) Construction of Septic Tank of different capacities as per approved drawing with 1st class brick work in coement moertar (4:1) including two 560 mm dia. R.C.C manhole cover of approved makde supplied, fitted and fixed in the top slab with necessary fittings, 19 mm thick cement plaster (4:1) with neat cement finish to the internal suraces and 12 mm thick cement plaster (4:1) to outside wall upto 200 mm below G.L. floor finished with 25 mm thick grey artificial stone including supplying, fitting and fixing all necessary specials, fittings, S.W. toes, C.I. foot rest etc. including excavating earth in all sorts of soil, shoring, bailing & pumping out water as necessary, ramming, dressing the bed and refilling the sides of the tank with earth, removing spoils, filling up the chamber with clear water, removing foregin materials from the chamber and including constructing attached inspection pit as per approved drawing and connecting all necessary pipes, joints etc. with internal plaster work and artifial stone flooring is to be done with admixture of water proofing compound					
	i) For 10 users	1 no.	18705.00	each	18705.00	
39	P-172/It.4 (Sanitary & Plumbing) Construction of of circular soak well 2.5 metre deep in all tyopes of sandy sokils with dry brick work upto 1.6 metre from the bottom having 150 mm intermediate cement brick work (6:1) band all round and cement brick work(6:1) upto 0.90 metre from top with 19 mm thick cement plastering (4:1) to inside face upto the depth of cement brick work, 12 mm thick cement plaster (4:1) on top of the R.C.C cover slab including filling bottom 1.00 metre of inside of the weklk with brick metal (50 mm to 63 mm size) including R.C.C cover slab of designed thickness with cement concrete (4:2:1) with stone chips with necessary reinforcement and shuttering including one 560 mm dia R.C.C manhole cover of approved make supplied, fitted and fixed in the cover slab with necessary					

Sl. No.	Description of items	Quantity	Rate		Amount	
			@	Per	Rs.	P.
	fittings, making necessary arrangements for pipe connections, excavation of well including shoring, dewatering and removing the excess earth from the premises as per direction complete in all respect with all cost of labour and materials. (a) With 250 mm thick dry brick work and 250 mm thick cement brick work (6:1) and 1.00 m inside dia.	1 no.	7195.00	each	7195.00	
40	P-168/lt.1 (Sanitary & Plumbing) Constructing Inspection Pit of inside measurement 600 mm x 600 mm X upto 600 mm (depth) with 250 mm thick 1st class brick work in cement mortar (6:1) on all sides, bottom of the pit consisting of 100 mm consisting of 100 mm thick cement concrete (6:3:1) with jhama khoa over a layer of jkhama brick flat soling, 12 mm thick (4:1) cement plaster to inside walls and out-side walls upto G.L. and 20 mm thick (4:1) plaster to bottom of the pit, providing necessary invert with cement concrete (4:2:1) with jhama chips as per direction, neat cement finishing to entire internal surfaces, top of the pit covered with 100 mm thick R.c.c. slabs (4:2:1) with stone chips and necessary reinforcements upto 1% and shuttering including 6 mm thick cement plaster (4:1) in all external surfaces of the slab and one 560 mm dia R.c.c manhole cover of approved make supplied, fitted and fixed in the slab with necessary fittings, necessary earthwork in excavation in all sorts of soil, filling sides of the pit with earth and removing spoils after work complete in all respect.					
	(A) Extra for each additional depth of 150 mm or part thereof beyond initial 600 mm depth.	1 Nos.	2700.00	each	2700.00	
41	P-324/lt.159 Supplying fitting and fixing in position approved P.V.C. door frame made of extruded P.V.C. multichamber hollow section having dimension 60 mm. x 50 mm. x 53 mm. and suitably reinforced, horizontal					

Sr. No.	Description of items	Quantity	Rate		Amount	
			@	Per	Rs.	P.
	section will be joined with vertical section by steel screws after inserting two number steel brackets as reinforcement making suitable for placing hinges, one steel tube 40 mm x 20 mm x 18 gauze will be inserted on one full vertical side of the vertical frame.	4.75 m	294.00	m	1396.50	
42	P-326 /lt. 160					
	Supplying fitting and fixing P.V.C. door shutter of approved quality & shade in position, the style & rail of the P.V.C. door shutter will be made of rigid P.V.C. multicavity hollow chamber of suitable size and section with 2.5 mm. wall thickness, the section will have 2 no. built in beads, horizontal & vertical section shall be fixed to each other by self tapping screws and 2 no. of M.S. tubular galvanised brackets of length 200 mm. x 80 mm. and other 100 mm. x 100 mm. both 18 gauge in each corner of the shutter frame for placing hinges, polymer based multicavity hollow section of 25 mm. thickness will be fitted in the middle with aluminium cleat and steel screws as lock rail, the section frame will then be fitted in by polymer based panels of suitable size and 2 no. of 6 mm. dia bright rod will be inserted horizontally with both sides					
	b) 30 mm. thick shutter with 25 mm. thick panel (wall thickness 1.2 mm. and 60 mm. width styles and rails with lock rail 120 mm.	1.50 m2	2035.00	m2	3052.50	
43	P-70/lt.9 (Sanitary & Plumbing)					
	Supplying P.V.C water storage tank of approved quality with closed top with lid (black) multilayer					
	a) 500 litre capacity	1 no.	2735.00	each	2735.00	
44	P-88/lt.11 (Sanitary & Plumbing)					
	Lead pipe 3 mm thick metal including making plumbing joint with brass coupling fitted and fixed					
	ii) 20 mm dia	1 no	44.00	each	44.00	

Sl. No.	Description of items	Quantity	Rate		Amount	
			@	Per	Rs.	P.
45	P-90/lt.12 (Sanitary & Plumbing) Supplying fitting & fixing approved brand P.V.C waste pipes with coupling at one end fitted with CP over brass nut 32 mm dia					
	i) 600 mm long	1 no.	52.00	each	52.00	
46	P-90/lt.13 (Sanitary & Plumbing) CP Chain and stay with rubber plug supplied fitted and fixed					
	ii) 32 mmm dia	1 set	37.00	each set	37.00	
47	P-10/lt.1 (Sanitary & Plumbing) Supplying fitting & fixing G.I> pipes of TATA make with all necessary accessories, specials viz., socket, bend, tea, union, cross, elbow, nipple, long screw, reducing socket, reducing tea, short piece, etc. fitted with holder bats clamps, including cutting pipes making threads fitting fixing					
	a) ii) 15 mm dia medium quality	4.5 m	124.00	m	558.00	
	b) ii) 20 mm dia medium quality	4 m	139.00	m	556.00	
					257886.49	
Add: Electricity					14505.2	
Add: Contingency @ 5%					12894.32	
<i>Add contingency 3%</i>						
TOTAL					285286.01	

222661.51
14363.40
237024.57
7110.77
2,44,135.24

Say Rs. **2,85,286/-** ~~2,44,135.24~~

2,47,762/-

2,26,395.61
14,149.80

[Signature]
Sub-Assistant Engineer
Bansberia Municipality
Sub-Assistant Engineer
Bansberia Municipality

[Signature]
Assistant Engineer
Bansberia Municipality
Otpak Kumar Bhattacharyya
Assistant Engineer (KUSP)
BANSBERIA MUNICIPALITY

[Signature]
Chairperson
Bansberia Municipality
2,40,545.41
7,216.36
Chairperson
Bansberia Municipality
2,47,761.77

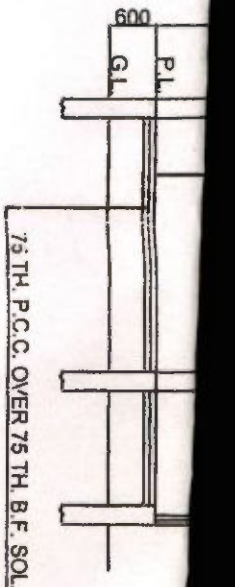
[Signature] 29/10/07
Sub. Assn. Engineer
G. S. D. Hooghly Divn
Chisoreb

MAY BE APPROVED
[Signature] 02/11/07
Asst. Engineer
Hooghly Division, M.B. Dtr
Govt. of West Bengal

APPROVED
[Signature] 06/11/07
Executive Engineer
Hooghly Division, M.B. Dtr
Dept. of Municipal Affairs
Govt. of West Bengal



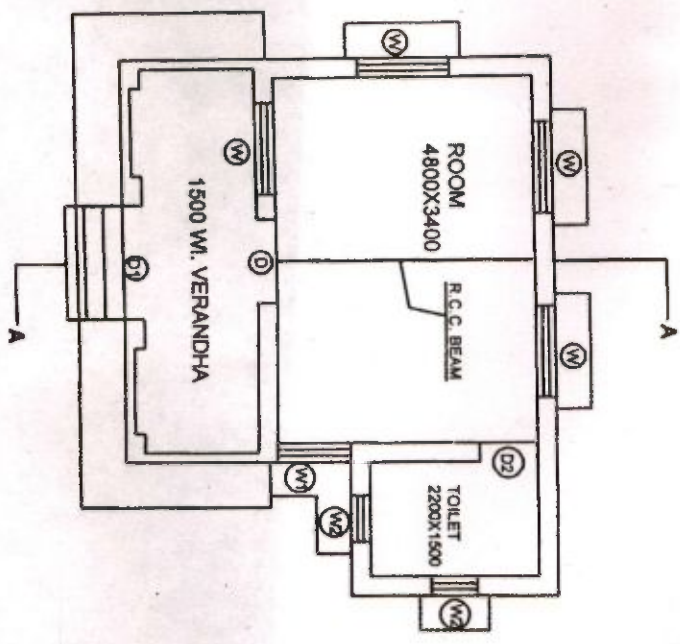
FRONT ELEVATION



SECTION OF A-B

DET. OF BEAM AND SLAB

250

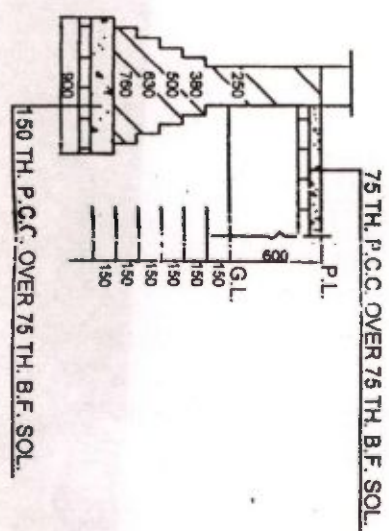


PLAN

SCALE:- 1:100

DET. OF FOUNDATION

SCALE:- 1:50



CONSTRUCTION OF HEALTH SUB-CENTRE WITHIN BANSBERIA MUNICIPALITY

SPECIFICATION
 1ST. CLASS BRICK WORK (6:1), PLASTER 10MM TH.(4:1) AT CEILING, INSIDE PLASTER 20MM TH.(6:1), OUTSIDE PLASTER 15 MM TH. (6:1), 125TH. BRICK WORK (4:1), 25 TH. D.P.C. (1:2:4), ALL CONCRETE M-20 GRADE WITHIN REINFORCEMENT, 25 TH. A.S.F. (1:2:4) OVER 75 TH. P.C.C. (6:3:1)

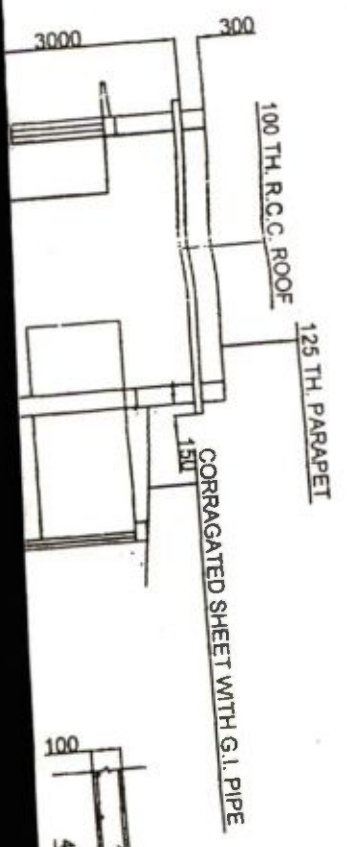
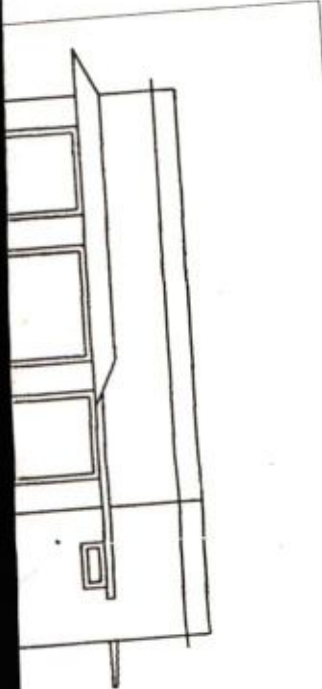
DOORS AND WINDOW SCHEDULE

W	= 1200 X 1200 - 4 NOS.
W1	= 900 X 1200 - 1 NOS.
W2	= 600 X 300 - 2 "
D	= 1100 X 2000 - (PANNEL)
D1	= 1100 X 2000 - "
D2	= 750 X 2000 - (PLASTIC)

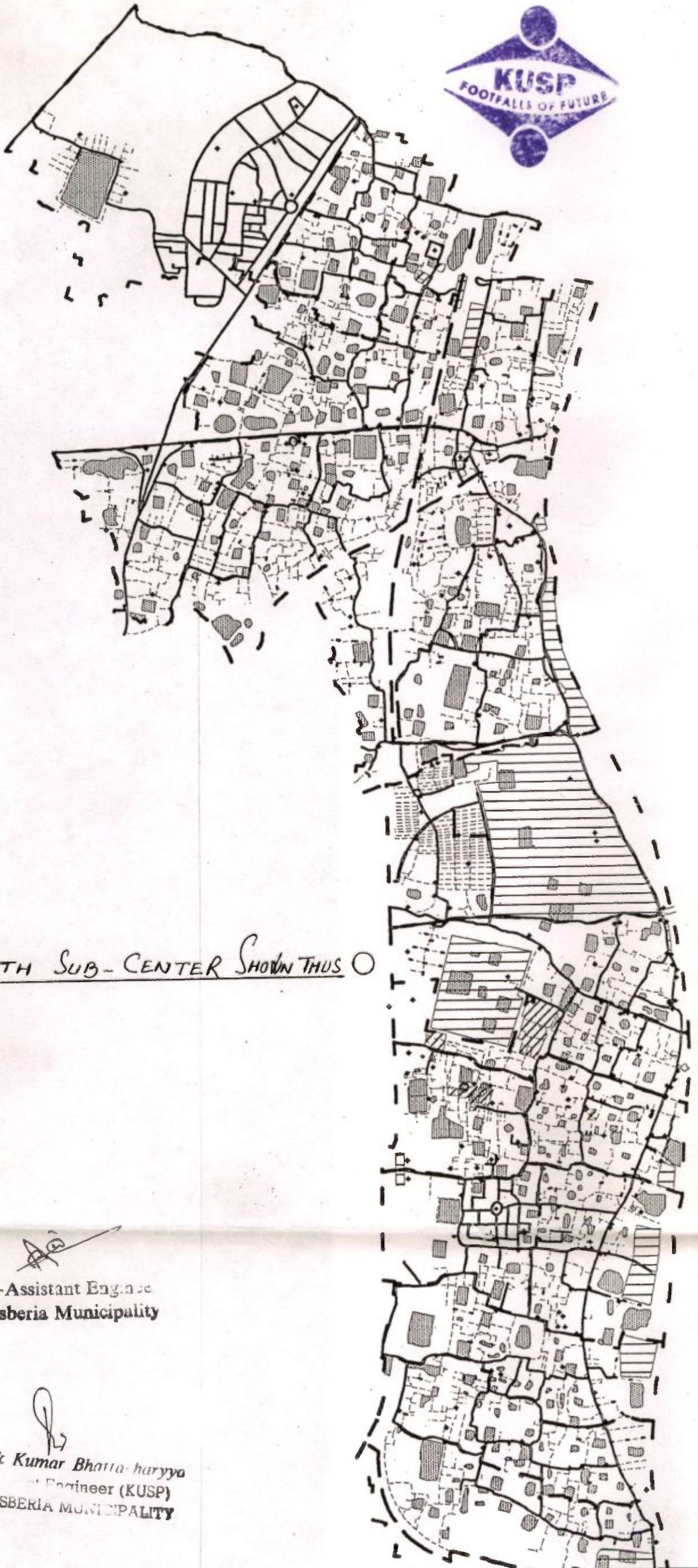
Sub-Assistant Engineer
 Bansberia Municipality

Dipak Kumar Bhattacharya
 Assistant Engineer (KUSP)
 BANSBERIA MUNICIPALITY

Chairperson
 Bansberia Municipality



MAP OF BANSBERIA MUNICIPALITY



HEALTH SUB-CENTER SHOWN THUS ○

[Handwritten signature]

Sub-Assistant Engineer
Bansberia Municipality

[Handwritten signature]

Binak Kumar Bhatta-haryya
Engineer (KUSP)
BANSBERIA MUNICIPALITY

N
▲

- IMPORTANT_LOCATION
- IMPORTANT_LOCATION
- ▭ IMPORTANT_LOCATION
- +— C.C. ROAD
- +— BRICK STONE ROAD
- B.P. ROAD
- BLACK TOP ROAD
- KANCHA ROAD
- | WARD BOUNDARY
- ▨ VESTED LAND
- ▩ POND
- ▭ WET LANDS